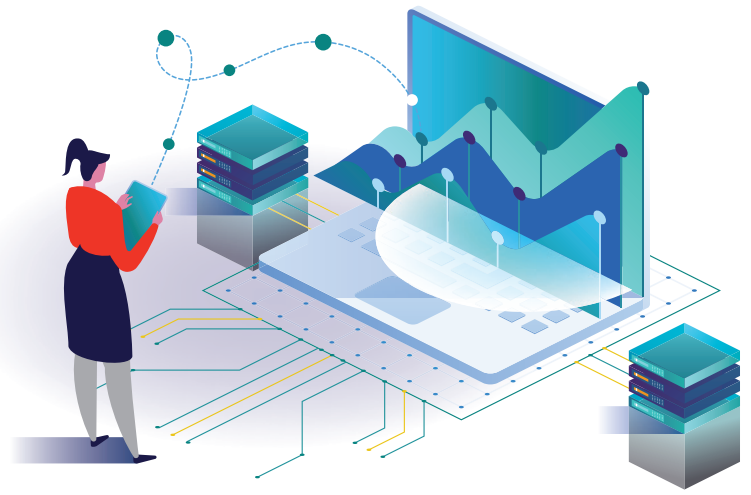


DATA SERVICES DATASHEET



SERVICE DESCRIPTION

At CACI, we are fully aware that effective data management is essential to a successful business. Through extensive experience and data-related knowledge, we can guide your organisation through the transition period of identifying and collecting your data sets and help build a refined data governance strategy.

The main objective is to ensure that the data-related aspects are proactively and efficiently managed in a standardised format that can be accessed and used when needed. This ensures that your stakeholders have the confidence in their data to make informed business decisions. This will also ensure accuracy of reporting and KPIs.

Our data management consultants will work together with you in an integrated manner to capture the business objectives, analyse data conformity, identify data issues and put in place safeguards to minimise the risk of poor data quality. This will help you achieve data governance goals

You may be at Capability Maturity Model Level 1 (Initial), where work is unpredictable and reactive; or at Level 2 (Managed), where projects are planned, performed, measured, and controlled. We can help you to make steps along the path to level 5 - Optimising.

Whatever your organisation's data capability starting point, we can make it better - Saving time, money and management effort.

KEY FEATURES

- **Data Management** – We'll manage the data generated by your organisation.
- **System Analysis** – We can support activities that ensure process, application, data alignment and identification of gaps
- **Data Strategy** – We enable development, execution and supervision of plans, architectures, policies, programs and practices
- **Data Design** – We'll define and support specification of data
- **Data Governance** – We provide a framework for managing people, processes, policies and culture around data
- **Data Transformation Services** – We'll support the process of converting data from one format to another
- **Data Architecture/Modelling and Design** – Our Data Architecture consultants will work with you to establish enterprise Data Architecture and Design
- **Data Consolidation** – We can collect and integrate data from multiple sources into a single destination

KEY BENEFITS

- As our approach is open, iterative and collaborative, we'll work in whatever way is best for you.
- Our service covers technical & non-technical aspects of your organisation which means you can be sure that nothing is missed.
- We will provide only practical and actionable recommendations so no time is wasted on unrealistic solutions.
- We use established industry frameworks including DAMA, TOGAF, ITIL, TMF, Frameworkx, eTom and SID. This means you can be sure we are only ever following the very best practice.

Our services can be delivered at a Gold, Silver or Bronze level depending on your need.
Contact us now to find out more.

CACI

DATA SERVICE CHARACTERISTICS



WHAT'S INCLUDED?

DATA SERVICE CONSULTANTS			
DAMA framework aligned TOGAF certified BCS Business Analysis certified TMF SID certified ITIL certified Framework eTOM aware			Applicable across all three packages. Applicable across all three packages. Applicable across all three packages. Applicable across all three packages. Applicable across all three packages. Applicable across all three packages.
TOOLS AND SYSTEMS			
Use customer provided laptop and applications if required	Yes	Yes	Yes
CACI provided laptop with MS Office 365, MS Visio Professional/Plan 2 supporting BPMN 2.0, MS Project if required	Yes	Yes	Yes
CACI provided data modelling tools such as EA Sparx	No	Yes	Yes
Use CACI provided data analysis tools	No	No	Yes
Utilise customer provided data automation tools	Optional	Yes	Yes
DATA MANAGEMENT			
Data architecture	Yes	Yes, includes:	Yes, includes:
Data and process alignment	Yes	<ul style="list-style-type: none"> one or more features 	<ul style="list-style-type: none"> multiple features
Data modelling & design	Yes	<ul style="list-style-type: none"> management element 	<ul style="list-style-type: none"> CACI managed package
Data quality	Yes		
Data migration	No		
Data integration & sharing	Yes		
Business intelligence	Yes		
Document management	Yes		
Metadata definitions	Yes		
Enterprise glossary	Yes		
Enterprise domain model	Yes		
DATA STRATEGY			
Business strategy alignment	No	Yes, includes:	Yes, includes:
Identify data requirements	Yes	<ul style="list-style-type: none"> one or more features 	<ul style="list-style-type: none"> multiple features
Identify 'data quick wins'	Yes	<ul style="list-style-type: none"> management element 	<ul style="list-style-type: none"> CACI managed package
Identify data owners, data producers and data users	Yes		
DATA GOVERNANCE			
Data governance structures & processes	Yes	Yes, includes:	Yes, includes:
Standard policies and procedures	Yes	<ul style="list-style-type: none"> one or more features 	<ul style="list-style-type: none"> multiple features
Data ownership	Yes	<ul style="list-style-type: none"> management element 	<ul style="list-style-type: none"> CACI managed package
Data security & access policies	No		
Data management maturity measures	Yes		
DATA ARCHITECTURE/MODELLING AND DESIGN			
Data Governance structures	No	Yes, includes:	Yes, includes:
Data masters and federation strategies	No	<ul style="list-style-type: none"> one or more features 	<ul style="list-style-type: none"> multiple features
Data formats e.g. TMF SID	Yes	<ul style="list-style-type: none"> management element 	<ul style="list-style-type: none"> CACI managed package
Data masters and federation strategies	Yes		
Meta data and data set modelling	Yes		
Standards data framework mapping such as TMF SID	Yes		
E2E representational model of the enterprise data using a suitable data modelling tool	Yes		
Detailed data attribute definitions and format	Yes		
Data migration and transformation designs	Yes		
Data consolidation approach & specification	Yes		
Identification and design of tools to migrate or federate data	Yes		
Data cleanse and transformation	No		
DATA QUALITY MANAGEMENT			
Data quality management strategy	Yes	Yes, includes:	Yes, includes:
Data Quality Management Procedures	Yes	<ul style="list-style-type: none"> one or more features 	<ul style="list-style-type: none"> multiple features
Data Quality Policies and Guidelines	Yes	<ul style="list-style-type: none"> management element 	<ul style="list-style-type: none"> CACI managed package
Data Quality Reports	Yes		